

Storage Hopper

Designed on the basis of our multiple stage dryer that have proven itself for more than 10 years, here is the adjustable hopper sold in kit form:

Available in 2x2 m or in 2,5x2,5 m, it can store nuts after washing (in that case we can attach a blower to it), before hulling or after drying operations.

Evacuation is carried out using a 0.17 kW vibrator (optional) to regulate the flow rate or by a quick opening.

The hopper's height is available in standard at 1,05 m above the ground but as the set is adjustable, it can easily be placed at ground level or at 1,50 m high so as to pour into an empty shell removal blower. Standard height is at 3 meters but we can increase it's capacity by adding side extensions.

Suitable crops:



Walnut



Almond



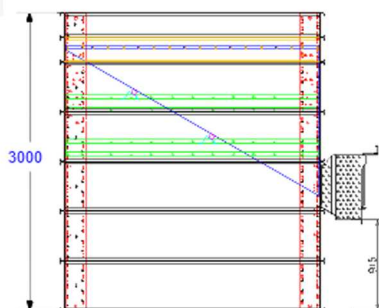
Hazelnut

TECHNICAL CHARACTERISTICS

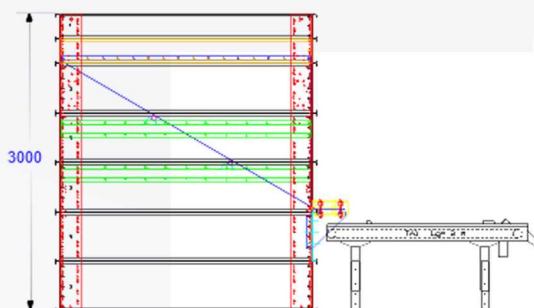
	2x2 m	2,5x2,5 m	3x2,5 m
Volume of the funnel	1,76 m³	3,38 m³	4,05 m³
Total volume			
3 m	4,76 m³	6,30 m³	7,56 m³
+ 1 m extension (from above)	8,76 m³	12,55 m³	15,06 m³
+ 2 m extension (from above)	12,76 m³	18,80 m³	22,56 m³

	Drain height
In standard (with manual output)	915 mm
With vibrating output option	1058 mm or 1305 mm
With vibrating output option + 500 mm extension kit	1805 mm

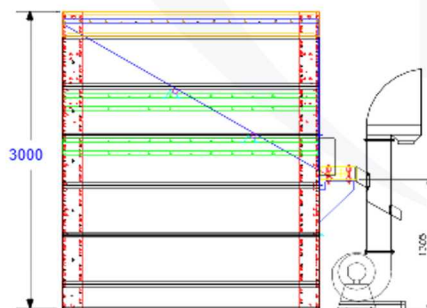
Manual output configuration



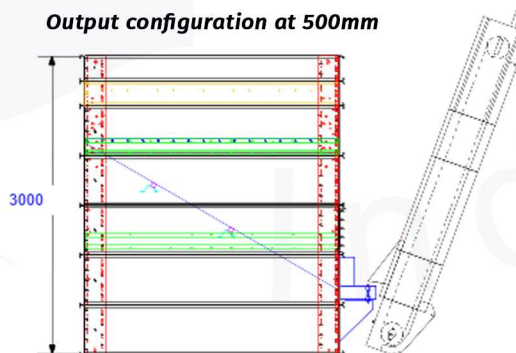
Vibrating output configuration



Configuration with SEP dry nuts



Output configuration at 500mm



Bottom part



Product output