

# Washer Huller L38

**3 m Ø 800 equipped with  
rollers hulling plates + brushes**



*This washer huller is the fastest shell and most versatile of our washers. It is designed to remove the green skin from the walnuts (husk) and wash them very quickly.*

## Suitable crops

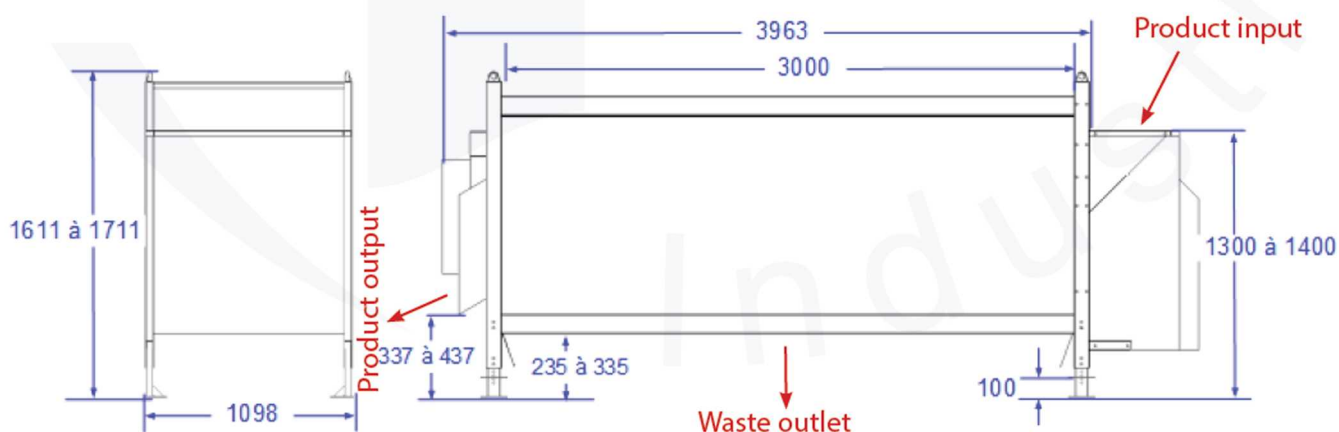
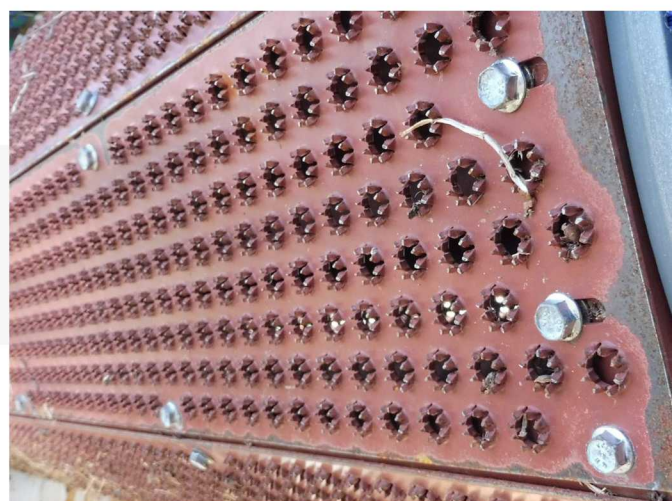


Walnut



Hazelnut

*Equipped with a motorized inner drum rotating in the opposite direction of the outer drum, it can, thanks to the variation of speed and the nature of the coating, act forcefully or smoothly continuously. Its solid chassis and components allow an intensive use. It is easy to maintain and the spare parts are easily available. The control is carried out by varying the filling ratio and the speed of rotation. Driving requires some experience.*



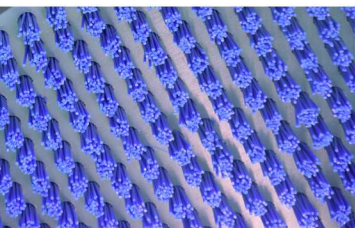


### TECHNICAL CHARACTERISTICS

- Performance: Raw walnuts: 6-7 m<sup>3</sup>/h. Washed walnuts: 5,3 m<sup>3</sup>/h.  
Fresh walnuts: 4 t/h. Dry walnuts: 2 t/h.
- Motorization: 2,2kW + 3kW - 380v
- Transmission: External Rotor by 2 coaxial gearmotors with belt. Internal Rotor by 1 coaxial gearmotor with belt.
- Water / Watering: Recommended water flow: 5m<sup>3</sup>/h. 2 Low pressure water ramps inside and outside.
- Driving position: The control is carried out by varying the filling rate and the speed of rotation of the inner drum by means of a speed variator. Reverse rotor direction possible.
- Outer drum: Ø 800mm mechanic-welded, laser/square 12/12
- Inner drum: Scaling plates mounted on a rotor. Brush plates on the 2 vertical faces of the rotor. Beater brush at the outlet.
- Unstuck brush: With helical turns
- Working: Continuous
- Feet: Adjustable 0 to 130mm in steps of 10mm. Initial adjustment of input foot 110mm - Initial adjustment of output foot 90mm. Factory outlet slope ≈1% (20mm offset between adjustable entry and exit feet).
- Options:
  - Brush drum
  - Speed variator on the drum
  - Scaling rotor with electric variator
  - Motorized door
  - Pre-washer type outlet chute (without hole) (replacing washer type)
  - No rotor to put in pre-washer (replacing the shelling rotor)
  - Slag water re-injection pump
  - Recycling bin for washing water
  - High pressure outlet ramp
  - Side and central deflectors
  - Extensions (250mm, 500mm, 750mm or 1000mm)
  - Special drum for smaller nuts (hazelnuts, almonds, chestnuts) to limit scratching of the product by sheathing the bars
- Security: Comply with EC standards
- Dimensions:
  - Length - 3,80m
  - Width - 1,08m
  - Height - 1,62 m
- Weight: 1 540 kg



## OPTIONS



- **Special brushes on hulling rotor for earthy nuts on clayey ground**  
Instead of the punctured metal for fragile walnuts ( Parisiennes, Chandleur,...)



- **Motorized Door**  
Enables the control of the filling level

- **Speed variator on drum**  
Optimizes washing for difficult production



- **Dirty Water (recycled) / clean water ramps**  
Enables a better management of the used water. Economy thanks to the recycling of pre-washed water (last rinse of walnuts with clean water (city water). According to the specifications of the PDO walnuts of Grenoble and walnuts of Périgord.

- **High pressure ramp**  
Enables a better cleaning thanks to the high pressure provided (for earthy or first shaken walnuts)



- **Lateral and central deflectors**
- **Transverse carpets and cover**  
Enables the management of the liquid and solid waste that are grouped separately in one point

- **Extension Legs**  
Enables a tailored adaptation according to each installation



## THE BENEFITS

**Speed:** removal of waste and bad walnuts

**Less labour:** sorting requires less people

**Efficiency in waste sorting:** with deflectors and transversal and return conveyors options

**Adaptation to different locations:** extensions legs, continuous operation with two machines

**Economy and respect of the environment:** reduced water consumption through dirty (recycled)/clean waterways

## USE

- Opened green walnuts to finish hulling
- Clayey soil which causes earth infiltration in the walnuts interstice
- Closed green walnuts for sale as fresh nuts (capacity: 500 kg of fresh hulled walnuts/hour)

**40% open nuts  
10% closed nuts**



**WASHING & HULLING**



**tel: 032 2 044 333**

**e-mail: sales@farmarea.ge**